



MAPPA

MERSEYSIDE

Annual Report 2008/09

A Report on the Area's Multi-Agency
Public Protection Arrangements

Probation, Police and Prisons, Working Together to Protect the Public



MAPPA Merseyside

Annual Report 2008/009

CONTENTS

Responsible Authorities	3-5
Key Achievements	6-7
The MAPPA Framework	8-9
Local Operations	10
Case Studies	12-13
Board Member's Perspective	14
Statistical Information and Comment	15-17
Strategic Management Board Membership	18

Responsible Authorities

PROBATION



The Merseyside Probation Trust continues to be a leader in driving effective partnership working to manage offenders and protect the public. Merseyside MAPPA (Multi Agency Public Protection Arrangements) is at the very forefront of this work, and this its eighth annual report reflects a period of further improvement and consolidation. The report continues to provide evidence that the most dangerous individuals in our communities are identified and managed in a robust way to ensure public safety.

The co-operation of a range of agencies, ever improving information sharing, and joint management and accountability within a statutory framework encapsulate the ethos of MAPPA. Our practice continues to develop, and has become a powerful tool in terms of targeting resources and delivering positive results to ensure the public are protected. It is difficult and demanding work which is resource intensive, but there is no room for standing still. Exceptional performance and continuing improvement remain a priority for all involved. Merseyside Probation Trust is totally committed to both MAPPA and the drive to ensure practice is of the highest possible standard.

All the agencies involved in MAPPA are working in ever closer partnership. The development of ViSOR, a shared IT system between the Police, Probation and Prisons will improve information sharing and communication, and is fundamental to monitoring and assessing the behaviour of high risk offenders subject to MAPPA. Furthermore, the recent publication of National MAPPA Guidance will provide structure and direction to improve MAPPA practices both locally and nationally.

Merseyside Probation Trust is committed to be at the forefront of all the aforementioned developments by continuing to give high priority to public protection, with the care of victims of crime at its heart. The Trust adopts a collaborative approach to ensure effective working partnerships are maintained, and will continue to apply the highest of professional standards.

The public of Merseyside should be reassured that MAPPA is a powerful force in managing the most dangerous people in our society, and that Merseyside Probation Trust is totally committed to delivering public protection through these arrangements.

John Stafford

Chief Executive Officer
Merseyside Probation Trust

POLICE



Merseyside Police has the overarching aim to provide the best police service in the UK. We are achieving this through our Total Policing Strategy, which means that all of our resources are directed towards a total war on crime, a total care for victims and total professionalism.

We have seen considerable success since we engaged in this strategy in 2006. We have reduced overall crime by a third, meaning over fifty seven thousand less victims of crime. This includes over seventeen thousand fewer victims of violent crime.

Criminal behaviour undermines confidence in local communities and creates a climate of fear. We are committed to enforcing the law robustly and ensuring that offenders are arrested and successfully prosecuted. This will provide reassurance, minimise the fear of crime, enhance feelings of safety and create an environment where there is no hiding place for the criminal.

As a Responsible Authority engaged in the MAPPA process, Merseyside Police continues to strive with its partners to make Merseyside an even safer place to live, work and visit. We are totally committed to working together in providing an effective strategy to robustly manage the risk posed by sexual and violent offenders.

Yet again MAPPA Merseyside has emerged as a capable and competent structure to identify and manage offenders. This has been achieved by developing effective partnerships with other agencies and improving the way we share information, thus allowing us to effectively assess and manage the risk posed by individuals to protect the public.

I am confident we can further build on our success through continued collaborative working with Prison and Probation Services thus providing a safe environment for the people of Merseyside.

Bernard Hogan-Howe

Chief Constable
Merseyside Police

Responsible Authorities

PRISONS



I am pleased to report that 2008/2009 has been a year of further improvements in the way the Prison Service contributes to the important work of protecting the public in Merseyside. Significant progress has been achieved in the way staff from prisons, police and probation work together to share information and agree resilient management plans to reduce the risks posed by these offenders.

This critical work, by its very nature, often goes unreported, but it is crucial that the people of Merseyside have confidence that we are working collaboratively to protect our communities. I believe the progress made in Merseyside this year contributes to the building of community confidence in MAPPA.

As one of three Responsible Authorities, alongside our partners in Merseyside Police and the Probation Service, the Prison Service works closely with the Duty to Cooperate Agencies within MAPPA. This year has seen further developments and consolidation to the way we work with this diverse range of organisations and agencies. This integrated approach to managing risk is key to how we work within prisons and contribute to protecting the public when offenders are released back into the community in Merseyside.

A number of initiatives introduced during the year have placed greater emphasis on the role of the Prison Service in protecting the public, which I welcome, notably:

- The implementation of ViSOR in all prisons and probation areas for risk information to be shared with police more efficiently;
- The publication of the new national Prison Service Public Protection Manual to further professionalise the work of prison staff in this area;
- The introduction of a Regional Public Protection Forum for all prisons in the North West;
- The appointment of Caroline Marsh as the regional Director of Offender Management;
- The restructure of the National Offender Management Service to focus on delivering the corporate objective of protecting the public and reducing reoffending.

The Prison Service's active membership of Strategic Management Boards and our attendance at MAPPA Risk Management Meetings and Public Protection Panels are real evidence of our commitment to protecting the public. In addition, the management of high risk offenders in custody, and the gathering and sharing of relevant information with partners is of great importance, exemplified by our role in ensuring all relevant parties are aware of discharge arrangements - especially any unexpected changes in release dates. I am confident that the Prison Service and NOMS now have resilient arrangements in place in Merseyside, and that along with our other partners we will target resources where they are most needed in order to fulfil our obligations to the community.

D I Lockwood CBE

North West Area Manager
HM Prison Service

Key Achievements

Merseyside was amongst the first areas to commit to multi-agency management of those offenders who posed the greatest risk to the public before it became a legal requirement to do so. Since then there has been a continuing development of best practice reflected in the fact that, during the twelve months to March 2009, 112 registered Sex Offenders, 189 violent offenders and 131 other dangerous offenders have been managed through the MAPPA framework (totalling 432). Of these, 14 were recalled to prison for failing to comply with their post-release Licence conditions, and 2 more imprisoned for failing to comply with the terms of their Sexual Offending Prevention Order (SOPO), a total of 16 (4%). None were convicted of a serious further offence.

This impressive record comes as the result of steady, conscientious, hard work, and a formidable investment of time. For example, the most complex cases are managed at Level Three. These require a full review every six weeks as a minimum, whilst those at Level Two are reviewed every eleven weeks. The reviews are not paper exercises alone, but take place in meetings lasting up to 90 minutes. These are attended by representatives of Probation, Police and Prisons, along with others involved in providing resources for managing the case (for example Health and Accommodation agencies). The reviews will assess the effectiveness of risk management planning and make adjustments where necessary to reflect heightened or lowered risk. Level Three reviews are chaired by senior operational managers, and Level Twos by middle managers.

A wide variety of agencies are represented at the table, so clarifying (and agreeing) expectations concerning what each can expect of the other in terms of assessing and managing the most risky offenders is paramount. Accordingly, a major piece of work currently underway within the Strategic Management Board (SMB) is the development

of a 'Memorandum of Understanding' between the three Responsible Authorities (Police, Probation and Prisons) and those agencies with a Duty to Cooperate. This work is due to conclude in the late summer, for sign-off by all heads of service.

Running hand-in-hand with clarifying and agreeing expectations is a need for appropriate training to enable staff to carry these through. Accordingly, a key strategic aim for the SMB in the coming year is to build on and expand existing training arrangements through an enlarged training sub-group (chaired by the MAPPA Co-Ordinator).

MAPPA has made a very significant contribution to the effectiveness of the Merseyside Police-led operations to address the menace of gun and gang related violence in certain areas in the County. All offenders convicted of offences of this nature are managed within the MAPPA framework, and the results have been impressive and a credit to all agencies involved. The SMB is also involved with the associated development of the Police's Violent Offender Management Unit.

While there is much to celebrate concerning the effective management of Merseyside's riskiest offenders, the SMB remains committed to a policy of continual improvement. For example, last Spring the Board spent time digesting the learning from the enquiry into the Craig Sweeney case – a case that had been managed via MAPPA in another area, but where aspects of practice were found wanting. The SMB has also put in place the arrangements necessary for undertaking a Serious Case Review (SCR). These commence under certain circumstances when an offender actively managed at Level Two or Three is charged with a serious further offence. The SCR process is designed to run alongside any internal enquiry an agency undertakes, and examine in particular how MAPPA has worked, and what lessons (if any) should be learnt.

Key Achievements *Continued*

Another example of the strive for continual improvement is provided by the annual 'quality assurance' audit of a sample of the many sets of notes taken at MAPPA meetings. These documents are critical records of information shared and decisions reached, and must be 'up to scratch.' The audit results have been discussed at SMB and taken back into the respective agencies for action where necessary.

On the subject of quality, a set of Key Performance Indicators (KPIs) has been introduced, and will be reported on in next year's Annual Report. The KPIs address such things as attendance at MAPPA meetings, both at operational and strategic level. Where agencies may be found wanting in attendance terms this will become much more transparent, and enable remedial action to be taken in a more concerted and joined-up way.



Looking ahead, the SMB Annual Business Plan for 2009-10 includes the following objectives:

1. MAPPA Development Strategy

- Disseminate new MAPPA Guidance.
- Complete Memorandum of Understanding to clarify and set down internal communication processes and clarify mutual expectations.
- Improve the use of ViSOR by all three Responsible Authorities.

2. Monitoring and Evaluation Strategy

- Monitor performance of MAPPA.
- Ensure continued recruitment and engagement of lay advisors within MAPPA
- Undertake annual quality audit of MAPPA minutes, make recommendations and develop Action Plan.

3. Communication and Strategic Partnership Strategy

- Promote communication, awareness and understanding of MAPPA with the public, Responsible Authorities' staff, Duty To Cooperate agencies' staff and MAPPA eligible offenders.

4. Develop Training Strategy to support:

- New Lay Advisors.
- New MAPPA Chairs and Practitioners.
- New SMB Members.

The MAPPA Framework

What is MAPPA?

MAPPA are a set of arrangements to manage the risk posed by certain sexual and violent offenders. They bring together the Police, Probation and Prison Services in Merseyside into what is known as the MAPPA Responsible Authority.

What does it do?

The purposes of MAPPA are to ensure more comprehensive risk assessments are completed, taking advantage of co-ordinated information sharing across the agencies; and to direct available resources to best protect the public from serious harm.

Who is involved?

A number of other agencies are under a duty to co-operate with the Responsible Authority. These include Children's Services, Adult Social Services, Health Trusts and Authorities, Youth Offending Teams, local housing authorities and certain registered social landlords, Jobcentre Plus, and electronic monitoring providers.

How does it work?

Offenders eligible for MAPPA are identified and information is gathered/ shared about them across relevant agencies. The nature and level of the risk of harm they pose is assessed and a risk management plan is implemented to protect the public.

How is it managed?

In most cases, an offender will be managed under the ordinary arrangements applied by the agency or agencies with supervisory responsibility. A number of offenders, though require active multi-agency management, and their risk management plans will be formulated and monitored via MAPP meetings attended by the various relevant agencies.

The MAPPA Framework

Offenders subject to MAPPA fall into one of three categories:

CATEGORY ONE

Registered Sex Offenders

Sex offenders who are required to notify the police of their name, address and other personal details, and of any subsequent changes to those details.

CATEGORY TWO

Violent Offenders

Offenders sentenced to imprisonment/detention for 12 months or more, or detained under hospital orders. This category also includes a small number of sex offenders who do not qualify for registration, and offenders disqualified from working with children.

CATEGORY THREE

Other Dangerous Offenders

Offenders who do not qualify under categories 1 or 2 but who currently pose a risk of serious harm, and there is a link between the offending and the risk posed. Offenders in this category require active multi-agency management.

There are 3 levels of management which are based upon the level of multi-agency co-operation required to implement the risk management plan effectively. Offenders will be moved up and down levels as appropriate:

MAPPA MANAGEMENT LEVELS

Level 1: Ordinary Management

These offenders are subject to the usual management arrangements applied by whichever agency is supervising them. But this does not rule out information sharing between agencies via ViSOR and other routes.

Level 2: Active Multi-agency Management

The risk management plans for these offenders require the active involvement of several agencies via regular multi-agency public protection (MAPP) meetings.

Level 3: Active Multi-agency Management

As with level 2, but these cases additionally require the involvement of senior officers to authorise the use of special resources, such as police surveillance or specialised accommodation, and/or to provide ongoing senior management oversight.

ViSOR

ViSOR is a database holding details of sexual and violent offenders, and other dangerous persons. The three MAPPA Responsible Authority agencies - police, prison and probation - are able to work on the same IT system enabling the sharing of risk assessments and risk management information on individual violent and sex offenders in a timely way to reduce re-offending.

Local Operations

The work of MAPPA (Multi-Agency Public Protection Arrangements) at a basic operational level is essentially a series of meetings involving professionals from relevant agencies (e.g. police, probation, housing, children's services) who come together to assess risk and ensure a robust multi-agency risk management plan is established.

The decision making authority is the MAPPA meeting. All agencies sign up to clear business principles, and are held accountable by regular review meetings to monitor changes in circumstances and/or scrutinise progress.

MAPPA business is conducted on the basis of national guidelines to ensure consistency of practice. The universal aim of MAPPA is to ensure safety of the public at all times.

On Merseyside, MAPPA functions at a local level consistent with Local Authority boundaries and Police Basic Command Units (BCUs). This offers greater understanding of local networks and structures, and provides access to local resources required to manage risk.

The day-to-day operational work is guided through the Strategic Management Board (SMB), currently chaired by an Assistant Chief Officer from Merseyside Probation Trust.

Probation, Police and Prisons are represented at senior management level, together with delegates at senior level from the five Merseyside Boroughs, NHS Trust, the Youth Offending Service, Merseycare, Children and Young People's departments, and the Forensic Psychiatry Service. The SMB is linked to other public protection structures through the involvement of Board members, for example Crime and Disorder Reduction Partnerships and local Safeguarding Boards.

The SMB has expanded its membership this year to include a representative of JobCentre Plus, and is looking to recruit a representative of Registered Social Landlords (RSLs).

Assistant Chief Constable Pat Gallen, and Detective Chief Superintendent Brian McNeill (Deputy Chair and Board Member respectively) moved to new responsibilities during the year, having made very significant contributions to the ongoing work of the SMB.

Uniquely in Merseyside, senior representatives from 'Resettle' and Support after Murder and Manslaughter (SAMB Merseyside) also serve on the SMB. 'Resettle' is an NHS funded project providing a valuable resource working with male offenders with severe personality disorders; SAMB Merseyside provides an equally valuable support service to the families of victims of the most serious violent crimes.

Lay Advisors are also a key component of the SMB Membership. Despite energetic efforts throughout the year, it has proved difficult to recruit to these two posts. However, at time of writing, it would appear that one post is shortly to be filled, with expressions of interest having been received for the other.

The responsibility of the board is to ensure practice standards within MAPPA are upheld (in line with national guidance), monitor performance, and identify needs or gaps in provision and scope for new development.

A MAPPA Manager/Co-ordinator locally ensures linkage to all agencies engaged with high risk and dangerous individuals. The role also ensures connection with other public protection structures such as safeguarding children, crime and disorder reduction partnerships and the Merseyside Criminal Justice Board.

Local Operations

Throughout the year MAPPAs on Merseyside have adopted a philosophy of refinement and continued improvement.

Work ongoing includes:

- Quality Assurance Audits.
- The establishment of sub-groups authorised by the Strategic Management Board to address issues regarding training, quality assurance, information sharing and the communication strategy.
- Engagement with forums dealing with gun and gang violence, utilising MAPPAs as an effective risk management process.
- Work with Job Centre Plus regarding the appropriateness of work/training placements for high risk offenders.
- Notification system to Local Authority Children's Safeguarding Boards regarding offenders who pose a risk to children.
- Enhanced procedures with Youth Offending Services regarding dangerous offenders and engagement with MAPPAs.
- Quarterly report back on Performance regarding attendance, frequency of meetings and reviews, disclosure etc.
- Maximising the use of VISOR - a shared computer (information sharing) system linked to police, probation, and prison.

The focus of MAPPAs is not merely confined to dangerous offenders and their management but also the protection of victims (both direct or potential). Every MAPP meeting is duty bound to ensure protective measures are part of the

risk management plan. This might include geographical exclusion zones or conditions not to approach or communicate with a victim. Furthermore, all victims are provided with statutory rights regarding the provision of a service to contact and provide information where the offence has been of a sexual or violent nature and the perpetrator has received a prison sentence of over twelve months.

The aim of MAPPAs on Merseyside is to safeguard local communities from violent and sexual offenders. It cannot eliminate risk, but for those individuals identified through MAPPAs it is a powerful and credible means of managing their behaviour.



Kieran's Story

Kieran (not his real name) is a sex offender who targets young males. He has little insight into his behaviour and will minimise his actions.

His offending record for sex offending dates back some twenty years. He has served various periods of imprisonment and has been made subject to Sex Offending Prevention Orders (SOPOs). He is currently serving a four year prison sentence for breaching a SOPO and will be released from custody shortly.

Kieran has a low IQ and poor basic skills. He is from a large extended family who are regarded as volatile and who tend to collude with his behaviour and minimise the seriousness of sexual offences against young boys.

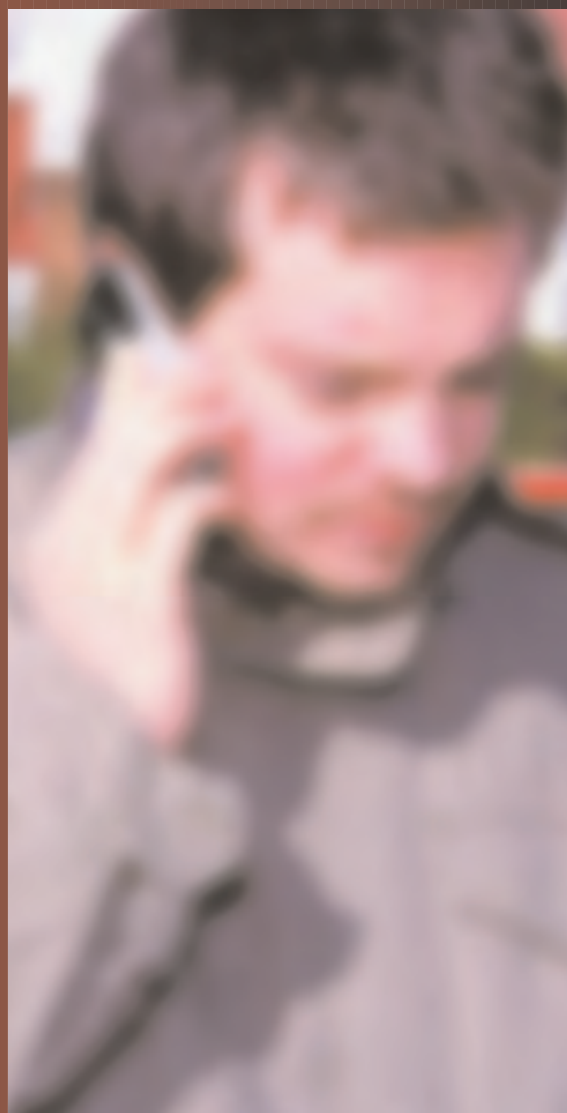
Kieran is an opportunist and manipulator, who will seek to generate situations to have contact with young people and seize upon any spontaneous situations that arise.

The risk of his inflicting harm against young children has been assessed as "very high" and his case therefore has been referred to MAPPA (Multi Agency Public Protection Arrangements).

A total of twelve professionals representing eight agencies came together at a MAPP meeting in advance of Kieran's release from prison.

A robust risk management plan has been established providing monitoring and control, supported accommodation with a curfew, a range of restrictive conditions in his licence and a Sex Offender Prevention Order which will be strictly enforced for any breach. This will include non association with children under 16 years, exclusion from certain areas and a condition to reside as directed.

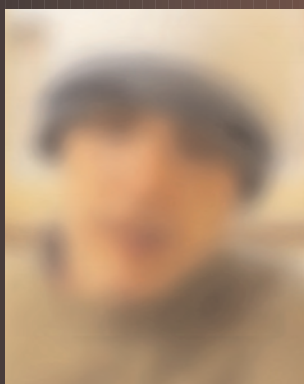
Assessed as the highest risk and managed at MAPPA level 3, review meetings will be held



every six weeks to monitor changes in circumstances and/or progress. Kieran will be offered the opportunity to engage in therapeutic work to address his offending to ensure a balanced approach between risk management, enforcement and rehabilitation.

This case illustrates the strength of MAPPA, where a range of agencies work collaboratively to manage a difficult, demanding and dangerous individual.

Liam's Story



Liam (not his real name) is a 22 year old offender convicted of Section 18 Wounding and Possession of a Firearm. He was sentenced to 7 years imprisonment and has recently been released from prison on licence.

Liam became involved in a local feud with other males. He armed himself with a gun and shot another male who he claimed had made threats against him. He has a criminal record and was viewed as an integral part of a gang and drug culture within his area.

On release he stated he would return to his local area. He is a young man regarded as a high risk to others, but also vulnerable to attack as a result of his involvement in gangs and tit for tat reprisals prominent in the area.

As part of its management plan the MAPP meeting placed Liam at a hostel with a curfew requirement away from the home area. His risk management plan also places restrictions on where he can live whilst subject to licence and who he can associate with. Various housing providers are working with Liam through MAPP to develop accommodation and resettlement options away from the area where he has criminal links. In this case a range of agencies, through MAPP, set in place a strategy to manage the risk but also offer constructive alternatives to involvement in gangs and a criminal lifestyle.

All MAPP meetings as well as devising a risk management plan to manage the offender, automatically address the specific needs of victims, as the following case illustrates.

The Victim's Story

Cathy (not her real name) was involved in a relationship with a man which she ended, and he found it difficult to deal with what he perceived as rejection. He made numerous telephone calls to her, and on one occasion rammed her car forcing it off the road. Protective measures were put in place by local police but Cathy was attacked and stabbed in the street close to her home. Her injuries were severe and life threatening. She suffered a stroke due to the trauma of the attack and is now disabled. The offender received an eight year prison sentence. Whilst serving this sentence he made various threats to kill against Cathy and her family.

The offender displayed extreme controlling behaviour, blaming the victim and viewing himself as wronged with no semblance of victim empathy. The ongoing threats to kill were recorded by prison security and charges were brought. The offender received an additional four years' custody but is now coming up to release from prison.

MAPP will manage the offender, ensuring a robust risk management plan is in place which will include protective measures to assist the victim. The police family liaison officer and a victim liaison officer from probation are working through MAPP with the victim and her family. They have now been rehoused to a new area.

The offender will be released to a probation hostel and will be subject to strict conditions as part of a prison licence. This will include a curfew, exclusions from certain areas and conditions not to approach the victim or her family. This will be monitored by police working closely with probation and other relevant agencies. Should any of the conditions be breached the offender will be immediately recalled to prison.

Cathy is an extremely vulnerable woman, and will require the full support of her family backed up by the protective measures introduced by MAPP.

Board Member's Perspective

SAMM Merseyside

“ My continued experience of being a Strategic Management Board (SMB) Member continues to give me an even clearer understanding of the MAPPA system. The inter-working of the 'Duty to Co-operate' agencies also continues to be extremely effective within the MAPPA Guidance and the new Memorandum of Understanding can only make the process more effective.

The positives of MAPPA continue to be negated by indifference of the media to the 'good news' that the annual statistics illustrate. The Aims and Objectives for the coming year include one of *'promoting communication, awareness and understanding of MAPPA with stakeholders, partners, the public and MAPPA eligible offenders'*. The reassurance that I gain from attending the SMB meetings, seeing the work of the agencies, and also the audit of cases, confirms that the process works to a very high, successful level that can be promoted with confidence.”

Lay Advisors

At present there are no Lay Advisors in post, despite extensive advertising. It may be that a member of the public (with no professional background in Criminal Justice) reading this report is interested in coming forward. If so, please contact the Human Resources Department of Merseyside Probation Trust (contact details on page 18) for further information.



Statistical Comment

A total of 377 cases were managed at MAPPA level 2 between 1st April 2008 and 31st March 2009. This represents a significant increase in the figures from the same period in the previous year (276). This is explained by greater awareness and use of MAPPA as an effective public protection process, the introduction of dedicated MAPPA/VisOR administrators and enhanced and more accurate data collection systems.

A total of 55 cases were managed at MAPPA level 3, which reflected an increase from 45 in 2007/08.

In terms of breach of licence, a total of 63 cases were breached and returned to custody at level 2, against 54 in the previous year. At level 3, the highest risk cases, 18 offenders breached and were returned to custody, against 11 the previous year.

There were two cases charged with serious further offences during the period. However, both matters were discontinued and no further action was taken. Of all cases managed through MAPPA on Merseyside between 1st April 2008 and 31st March 2009, no cases were convicted of a serious further offence.

Overall, the figures represent a significant increase in the use of MAPPA, with only a slight increase in cases being breached and returned to custody. It is also evident that agencies are utilising all resources available - for example, the increased use of Sex Offender Prevention Orders (SOPOs) to supplement MAPPA. Dedicated administrative resources have continued to result in accurate data collection and collation of MAPPA information.

The number of registered sex offenders living in the Merseyside Area on 31st March 2009 was recorded as 845, reducing from 1,025 the previous year.

In perspective, this accounts for less than 60 registered sex offenders per 100,000 head of population.

This fluctuating figure may be accounted for by the end of 10 year sex offender registrations, first imposed as part of the Sex Offender Act 1997.

The number of registered sex offenders cautioned or convicted for breach reduced from 58 in 2007/08 to 31 in 2008/09.

The number of Sexual Prevention Orders imposed increased from 21 in 2007/08 to 34 in 2008/09, although the actual number of applications decreased by 29%.

By comparison with last year, there has been a drop in the total number of Category 2 and 3 offenders reported (ie. the number of offenders who are eligible to be managed under MAPPA). This is due mainly to the difference in reporting methods made to ensure a more accurate picture. This year's figure is a snapshot, by comparison with last year's figure which reflected the number of such offenders over the whole year (included to give an indication of activity and outcomes in relation to those offenders managed at MAPPA levels 2 and 3). The Category 1 figure has been a 31st March snapshot for some years.

Number of MAPPA eligible offenders as at 31.03.09

Registered Sex Offenders	845
Violent Offenders	568
Other Dangerous Offenders	35
TOTAL:	1,448

Offenders managed via MAPP meetings as at 31.03.09

	Level 2	Level 3
Registered Sex Offenders	100	12
Violent Offenders	172	17
Other Dangerous Offenders	105	26
TOTAL:	377	55

Enforcement for offenders managed via MAPP meetings at 31.03.09

Returned to custody for breach of licence

Level 2	63
Level 3	18
TOTAL:	81

Sent to custody for breach of Sexual Offences Prevention Order (SOPO)

Level 2	1
Level 3	1
TOTAL:	2

Serious further offences involving offenders managed via MAPP meetings

Level 2	2
Level 3	0
TOTAL:	2

Of those charged during the year (Levels 2 + 3 combined) PLUS those who remained charged with a serious further offence, ie. at 31 March 2009

Convicted of a serious further offence	0
Other outcome	2
Remain charged with serious further offence	0
TOTAL:	2

Further data on Registered Sexual Offenders

Registered Sex Offenders in:

BCU A (Wirral)	195
BCU B (Sefton)	160
BCU C (Knowsley)	59
BCU D (St Helens)	97
BCU E (North Liverpool)	215
BCU F (South Liverpool)	128

Total number of Registered Sex Offenders in Merseyside per 100,000 head of population:

60

Registered Sex Offenders cautioned or convicted for breach of notification requirements:

31

Sexual Offences Prevention Orders

Applied for	25
Interim Order Issued	25
Full Order Issued	34

Notification Orders

Applied for	0
Interim Order Issued	0
Full Order Issued	0

Foreign Travel Orders

Applied for	1
Interim Order Issued	1
Full Order Issued	1

Statistical Information

The total of MAPPA eligible offenders, broken down by category, reflects the picture on 31st March 2009 (ie. a snapshot, as shown on the previous page).

The following categories are used:

Breach of Licence

Offenders released into the community following a period of imprisonment of 12 months or more will be subject to a licence with conditions (under probation supervision). If these conditions are not complied with, breach action will be taken and the offender may be recalled to prison.

Serious Further Offence (SFO)

A Serious Further Offence is a serious sexual or violent offence as listed in Probation Circular 22/2008. Other Outcome means that the case has been dealt with by 31st March 2009, but that the offender was not convicted of an SFO, eg. the offender was acquitted or the case not proceeded with, or s/he was convicted of a lesser offence. The data may include offenders who remained charged with an SFO at 31st March 2008 and, where so, this is indicated.

Sexual Offences Prevention Order (SOPO)

A court may make a SOPO at the time of dealing with certain sexual offenders or when the police make a special application on account of the offender's behaviour in the community. A full order lasts for a minimum of five years, and can last indefinitely. A SOPO will require the subject to register as a sexual offender, and can include conditions such as preventing the offender from loitering near schools or playgrounds. If an offender fails to comply with the requirements of the order, they can be taken back to court and may be liable for up to five years imprisonment.

Notification Order

A notification order requires sexual offenders who have been convicted overseas to register with police in order to protect the public in the UK from the risks that they pose. Police may apply to the court for the order in relation to offenders in or intending to come to the UK.

Foreign Travel Orders

A foreign travel order prevents an offender with convictions against children from travelling abroad (where it is necessary to do so), to protect children from the risk of sexual harm.

SMB Membership

Organisation	Name	Contact Details
Merseyside Probation Trust	Paul Holt Assistant Chief Officer	paul.holt@merseyside.probation.gsi.gov.uk 0151 920 9201 Ext.261
Merseyside Police	Steve Moore Temp Asst Chief Officer	stephen.moore@merseyside.pnn.police.uk 0151 777 8012
North West Prison Service	Eileen Fenerty-Lyons Risk Management Co-ordinator	eileen.fenerty-lyons@hmps.gsi.gov.uk 01257 344 628
Crown Prosecution Service	Martin Decker Crown Prosecutor	martin.decker@cps.gsi.gov.uk 0151 239 6472
Sefton Adult Services	Charlie Barker Director - Health & Social Care	charlie.barker@sefton.gov.uk 0151 934 3697
Wirral Children's Services	Howard Cooper, Director Merseyside Children's Services	howard.cooper@wirral.gov.uk 0151 666 4288
SAMM Merseyside	Gaynor Bell Chair Person (SAMM)	samm.merseyside@blueyonder.co.uk 0151 207 6767
SAMM Merseyside	John Sandwell Chief Executive	samm.merseyside@blueyonder.co.uk 0151 207 6767
5 Boroughs Partnership NHS Trust	Linda Crawley - Head of Modernisation & Improvement	linda.crawley@5bp.nhs.uk 0151 443 3028
Merseyside Youth Offending Services	Dionne Atkinson	dionne.atkinson@knowsley.gov.uk 0151 443 5495
Job Centre Plus	Jill Rothwell Partnership Manager	jill.rothwell@jobcentreplus.gsi.gov.uk 0151 802 2136
Merseyside Probation Trust	Don Rimmer MAPPA Manager/Coordinator	don.rimmer@merseyside.probation.gsi.gov.uk 0151 777 4527
Merseycare NHS Trust	Mark Sergeant CJLT Manager	mark.sergeant@merseycare.nhs.uk 0151 255 0040
Scott Clinic	Dr Stephen Noblett Clinical Director	stephen.noblett@merseycare.nhs.uk 0151 431 5122
Neighbourhood Management Services	Lesley Thompson Divisional Manager	lesley.thompson@liverpool.gov.uk 0151 233 4648
"Resettle" Personality Disorder Project	Teresa Mallabone Service Director	teresa.mallabone@merseyside.probation.gsi.gov.uk 0151 494 4390
Mental Health	Robert McLean Head of Forensic Social Care	robert.mclean@merseycare.nhs.uk 0151 473 2808

Designed by Kathy Felton-Aksoy
Communications Officer, Merseyside Probation Trust
Tel: 0151-920 9201 Ext. 211
kathy.felton-aksoy@merseyside.probation.gsi.gov.uk